



HEALTH COMFORTABLE 001A/B

If the content of the set is insufficient,
please contact the customer in consultation window.

Please
confirm before
assembling



castor*5



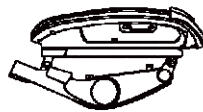
Foot*1



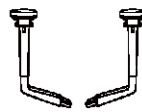
Air stick*1



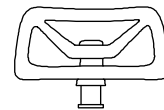
Headrest lock*1



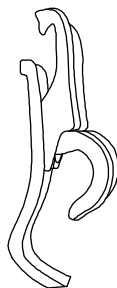
Chassis seat*1



Armrest*2



Headrest*1



Back of the chair*1



Hexagonal
wrench*1



Screws for headrest*2
(C4) 6*25mm



Armrest cover*2



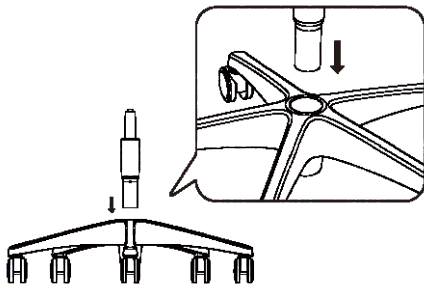
Handrail screw*2
(C2) 8*27mm



Screws for securing
base and back*4
(C3) 8*27mm

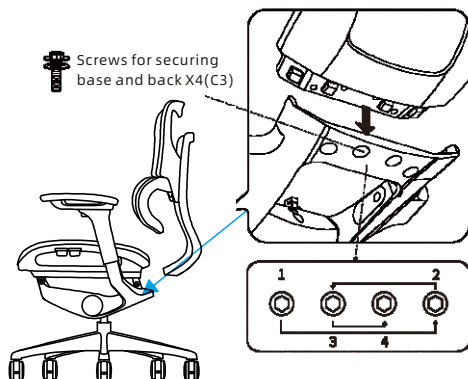
Assembly method

01.



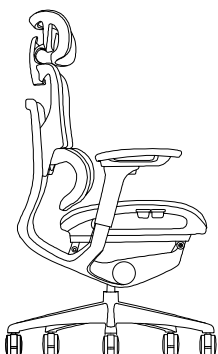
Please firmly swing the lower part of the cylinder (thicker part) into the foot base.

04.



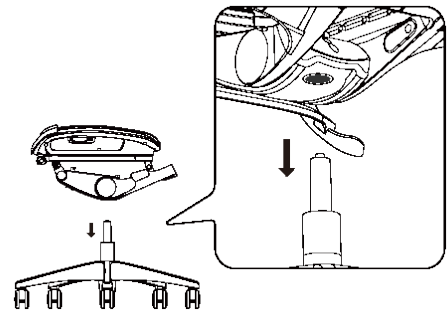
Please attach the seat to the lower part of the back and fasten it with screws. Please stop in order of drawing numbers.

06.



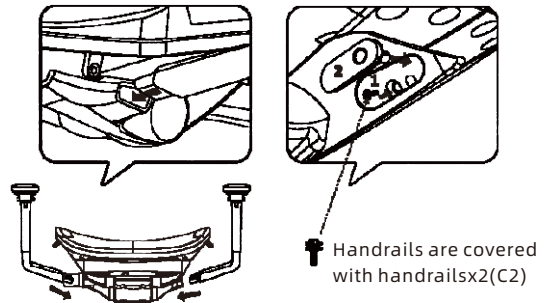
Note: Please determine whether the loosening and oscillation of each part can be used before use.

02.



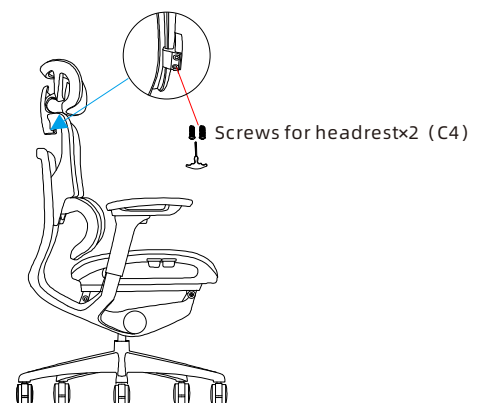
Insert the front end of the cylinder into the hole in the seat holder, press above the seat and insert firmly.

03.



Install the left and right handrails on the insert ports on the surface of the table, so that the operating lever is extended to the outside, and tighten the screws from the inside.

05.



Please place the headrest on the back of the chair and insert the headrest latch into the connecting part below the headrest.